



**Child & Family
Services –
From the Pandemic to
a New Normal?**



Solent
NHS Trust

**HFMA South
Central Branch
Conference**

Claire Robinson, Clinical Director
Richard Brown Operations Director
Alasdair Snell, Operations Director

09 September 2021

For Your Consideration....

- How have children been impacted by the pandemic?
- What has been the focus of the media?
- Where has investment been prioritised in your organisations?
- What do you think are the long-term implications?
- Where do we go from here?

“Children are the least likely to be affected by the virus but they have taken the worst hit”

Dame Rachel De’Souza, Childrens Commissioner of England

Introduction & Overview

- Organisation and Service Context
- State of Play Pre-Pandemic
- COVID-19 – What Happened
- What is the New Normal?
- Questions and Answers



Organisation Context



Established on

1 April 2011



Over £238m

annual income for 2020-21



Over

976,000

service user contacts



Portsmouth,
Southampton and
specialist services pan
Hampshire and
Isle of Wight

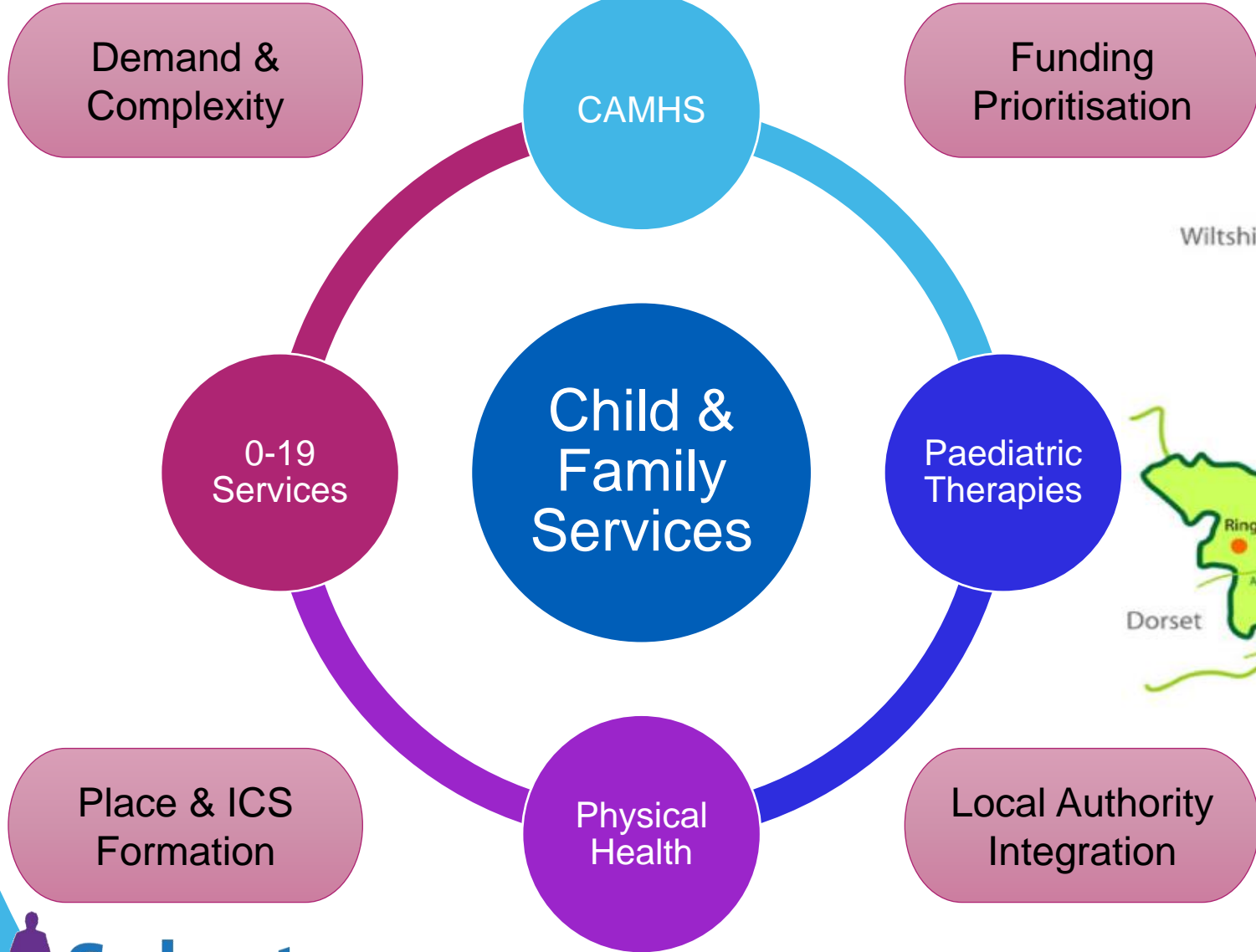
We employed 6,296 clinical and non-clinical people in 2020-21



We provide

Community, mental health
and specialist services

Service Context



Where were we before COVID – 19?

- Good 'Grip' despite challenges
- Innovations such as skill mix, partnerships, etc
- Good CQC Ratings
- CAMHS and Health Visitor National Workforce Shortages
- Reduction in Paediatric Training Places
- Consistent increasing demand and complexities
- Public Health Funding Challenges
- Non-Recurrent investments
- Looked After Children increases
- System politics with Integrated Care System on the horizon
- Postcode Lottery



COVID – 19 Wave 1

- Safeguarding concerns increase – School Closures
- Government / Media Focus on Adults
- Service Changes / National Directive
- System Acute Prioritisation
- Redeployment
- Staff shortages / Isolation / Sickness
- Waiting list increase
- 7 Day CAMHS and Community Children’s Nursing Offer
- Cut through red tape
- Remote Consultations / Working
- ‘Can Do’ Attitude from Workforce
- Activity up for CAMHS and AMH, down for all other services – 28% increase CAMHS Referrals Nationally
(*The Impact of COVID-19 on London’s Children and Young People. PHE May 2021*)



COVID – 19 Recovery & Restoration

- Learning from Wave 1
 - Safeguarding
 - School Closures
- Waiting List Recovery
- Supressed Demand / Public Reluctance
- Staff Wellbeing
- Strategic Planning
- Vaccinations on the horizon
- Do we go back to how things were? KPIs? Returns?
- Lessons Learned



COVID – 19 Wave 2

- School Closures
- ‘Eyes on the child’
- Vaccine (long-term) vs Interventions (short-term)
- Redeployment again
- Less severe service impacts
- Exhausted workforce
- Infection Prevention & Control / PPE
- Virtual Consultations
- Partnership Working
- Eased financial constraints
- Increased Paediatric Training Places



So what next?

- Stand by or New Normal?
- Elective Recovery Funding vs all Services waiting lists?
- Long-term implications of isolation?
 - Child Protection
 - Crisis
 - Eating Disorders
 - Respiratory Syncytial Virus (RSV)
- Public expectations
- Short-term vs Long-term Investment
- Parity in Investment – Children vs Adults (fire fighting)
- Recruitment & Retention
- Integration and Pathway focus
- Equality, Diversity and Inclusion
- Co-Production

In 2019, 78% of children aged between 2 and 4 accessed formal education or childcare. In the first lockdown this dropped to 7% - (The Impact of COVID-19 on London's Children and Young People. PHE May 2021)



The Future is Not Without Its Challenges, but is filled with Exciting Opportunities for Children's Services



Questions & Answers...hopefully

