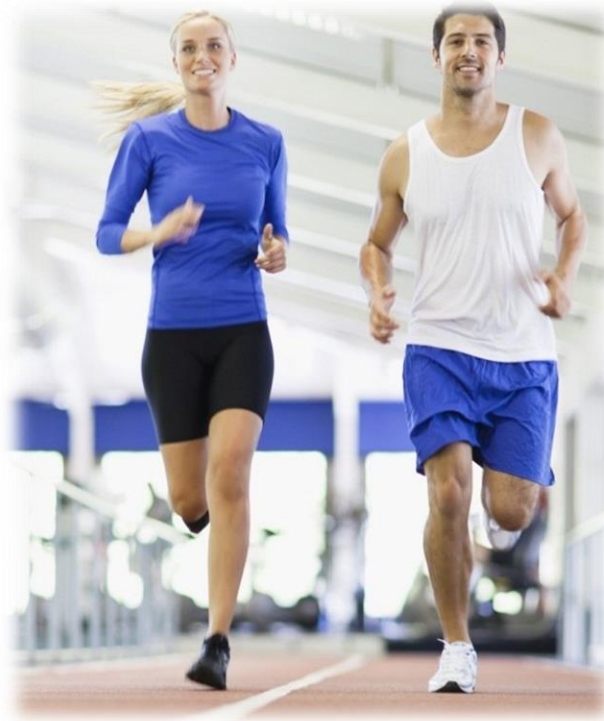


HFMA's SOUTH CENTRAL ANNUAL CONFERENCE

Developing the NHS 2018 - 2028

Thursday 13th September 2018



Dr Patricia Oakley
Director, Practices Made Perfect Ltd
Workforce Research Fellow King's College, London University
email: office@practices.co.uk . www.practices.co.uk

PUBLIC SERVICES IN THE 21ST CENTURY

- More public services for the same/less money.
- More technology, science and informatics to increase efficiency and efficacy.
- More multi-agency working to develop shared understanding of problems and approaches to commissioning services and deploying staff.
- Better educated and trained joint workforces to solve complex problems.
- Better reconciliation of delivery now while developing for the future.

NHS's 70th BIRTHDAY YEAR – DELIVERABLES

- Reducing Morbidity and Mortality – Government Priorities.
- Going Digital and Embedding Big Data and Big Science.
- Reducing Inequalities and Improving Life Chances.
- Moving to Integrated Care Systems and Operating “at scale”.
- Strategic Investment Programme and Public Finances Risk Management.

NHS's STRATEGIC INVESTMENTS

- Big Science –2 Waves
- Big Data and Lakes
- Life Sciences Industrial Strategy
- New Asset Class and Locus Shift
- Integrated Care Systems

BIG SCIENCE COMING TO YOU SOON

RCTs, Cash Flow, Research ➔ New Ways of Working



Genetic Profiling and Therapeutic Targeting.



Proton Beam Therapy and Novel Treatments.



High-speed informatics and cooling technology.



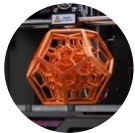
Stem-cell based research and new science.



Prosthetics, regeneration and bio-engineering developments.

THE SHAPE OF THINGS TO COME

Science & Technology-driven Improvements



Laser 3D-printed porcelain teeth, hearing aid, implants.



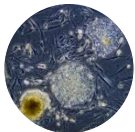
Laser 3D-printed cartilage, valves, prosthetics.



Personalised Medicine based on Genomics and Predictive Analytics.



Personalised Poly-Pharmacy Unit Dose Medicines.



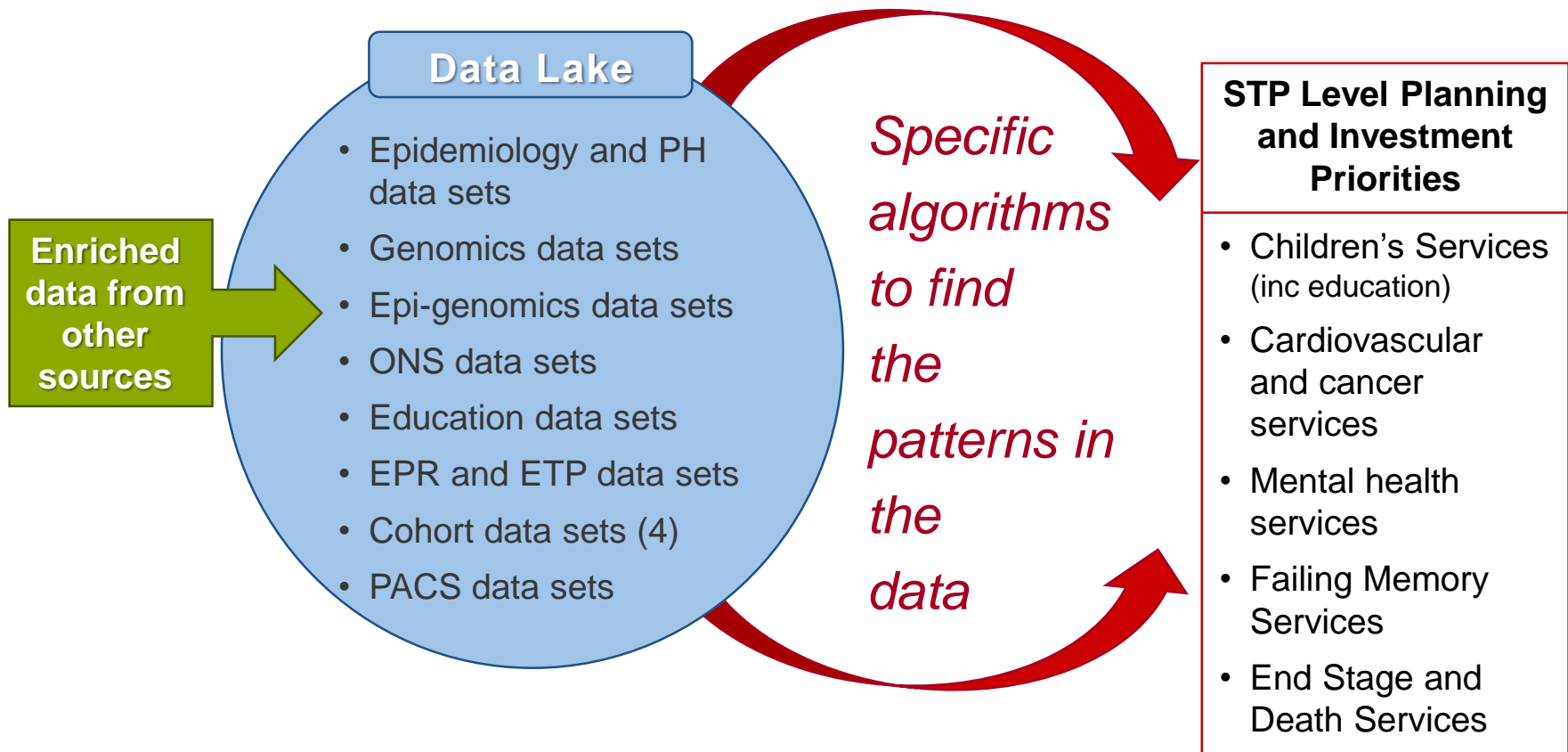
Biosimilars, mABs, stem-cell stimulated Corneas and Intestinal Villae.

GOING DIGITAL and EMBEDDING BIG DATA and BIG SCIENCE

An Integrated Data Strategy

- Develop Digital Lakes (Amazon – 50 Exabytes).
- Bring data from multiple databases to computers.
- Develop search engines and Analytical Platforms.
- Enrich the data from multiple sources.
- Create a Data Service incorporating machine learning.

REDUCING INEQUALITIES and IMPROVING LIFE CHANCES



Goal: Large voluminous data sets converted to insightful policy and focused investment priorities.

STRATEGIC INVESTMENT PROGRAMME LIFE SCIENCES INDUSTRIAL STRATEGY



- Health Advanced Research Programme (HARP).
- Partnership Framework – Industry, Charities, NHS, HMG.
- Genomics, Gel and Precision Medicine.
- Biobank expansion and Mine NHS data (Data lakes).
- Digital Pathology and Imaging.
- Clinical Trial Capability (Real World Studies).
- Early Development Networks and Convert SMEs to big Companies.
- SE Cluster Infrastructure and Research Investment (Oxford, Cambridge, and London).

THE NELSON CENTRE

A modern NHS facility providing integrated care for the local community



STRATEGIC INVESTMENT PROGRAMME PRIMARY and COMMUNITY CARE @ SCALE

- £5bn Community Asset and Technology Investment Programme – more “Nelson” centres and technology.
- Migration from GP – 10k list to Primary and Community Care Service Organisations with up to 1m list.
- Rapid Diagnostic and Imaging “high street” Services.
- Different Skill Mixes and Deployment Patterns.
- Big Bizz and Private Equity Investment Funds.

LOCAL NETWORK OF PUBLIC SERVICES – MANAGEMENT ARCHITECTURE

Chief Executive of the Integrated Services Network

Director of Medical Services (Chief of Staff)

- Director, Surgical & Obstetric Services.
- Director, Adult & Elderly Medical Services (inc. Social Care, Community Services and GPs).
- Director, Intensivist Services (inc. PICU and SCBU).
- Director, Family & Children's Services (inc. Child Protection Board)
- Director, Diagnostic & Imaging Services.

Director of Operations

- Director, Finance, Strategic Investment & Performance.
- Director, IT, Informatics & Data Governance.
- Director, Nursing, Quality & Patients' Experiences..
- Director, Estates, Asset Management & Investment Partners Relationships.
- Director, Human Resources, Organisational Development & Staff Well-being.

Director of Innovation

- Director, Research & Clinical Trials (stage 3).
- Director, Genomics & Clinical Bioinformatics.
- Director, Science & Technologies (inc. stem cell).
- Director, Learning & Practice Development.
- Director, Education & University Liaison Management.

Thank You



Dr. Patricia Oakley
Practices Made Perfect Ltd.

www.practices.co.uk
email: office@practices.co.uk