



HEALTHCARE
COSTING
FOR **VALUE**
INSTITUTE

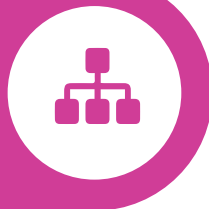
Prioritise the patient, care about the cost

The Institute supports the NHS to improve costing, turn data into powerful patient-level information, champion multi-disciplinary engagement and ultimately drive value across patient pathways.

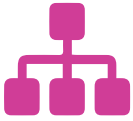
To make the most of patient-level information, finance and non-finance teams need to work together to adopt patient-level costing and embed its use as business as usual to help deliver high quality, sustainable healthcare.

Informatics

Turn over to find out more about your role in patient-level costing



The Healthcare Costing for Value Institute is part of the HFMA family



Informatics

Prioritise the patient, care about the cost



What is patient-level costing (PLICS)?

PLICS is about delivering costing information that more accurately reflects the care a patient receives. NHS Improvement has mandated the collection of patient-level costing for acute, mental health and ambulance services. It is anticipated that this will extend to community services in the future.

With the adoption of PLICS, the NHS has increasingly detailed information about its resources and how they are used. The Institute has a number of case studies, demonstrating how services use the richness of PLICS data to support improvements in patient care and drive efficiencies.



Why is PLICS important?

Understanding the cost of patient care is vitally important when making decisions about how to manage and deliver sustainable, high quality services. PLICS can help the NHS to better understand their current models of care, how they use their resources and what the impact would be of moving to a new way of delivering services.



How can PLICS help me?

Informatics professionals play a key role in ensuring that their organisation has good business intelligence to support data-driven decision making. Patient-level costing data, combined with other data sources, provides a rich source of information to help you understand your patients and services. PLICS requires robust activity data and informatics have an important role to play in validating the accuracy of data.

“PLICS can help divisions within the trust to better understand their specialties and identify opportunities to improve patient care. PLICS information can show trusts outliers against internal KPIs or national standards when benchmarked against other trusts.”

Informatics Lead. NHS Trust

Register for free with the Institute to receive briefings about the power of patient-level costing information

@CostingForValue | institute@hfma.org.uk | hfma.to/CostingForValue