

BOB
STP

Buckinghamshire Oxfordshire
and Berkshire West

Sustainability and
Transformation Partnership

Collaboration in Action: BOB STP Partnership

- Not a Statutory Body
- No power or authority
- Need to influence and collaborate

What is BOB STP?

- One of the four largest non metropolitan STP's in England
- Covers Buckinghamshire, Oxfordshire and Berkshire West
- The only partnership in England to have 2 first wave Integrated Care Systems (ICS)
- Covers a population of 1.8 million
- A budget of £2.5 billion
- Incorporates;
 - 3 Clinical Commissioning Groups (CCG's)
 - 6 NHS Trusts
 - 14 Local authorities

What is Collaboration

- 2 or more people or organisations working together to complete a task or achieve a goal
- Need to have a shared vision across 3 distinct geographical areas
- NHS has a history of ‘internal market’ and so has a natural tendency to compete
- Needs to add value and people need to want to do this
- Can offer opportunities to;
 - Deliver new services or more integrated
 - Make efficiency savings
 - Develop a stronger voice
 - Share knowledge and information

Challenges to Collaboration

- No plans to change legislation
- Different accountabilities; Funding and Performance
- Different employers- barriers to integration
- Needs a different mind-set
- Have to learn to 'let go'

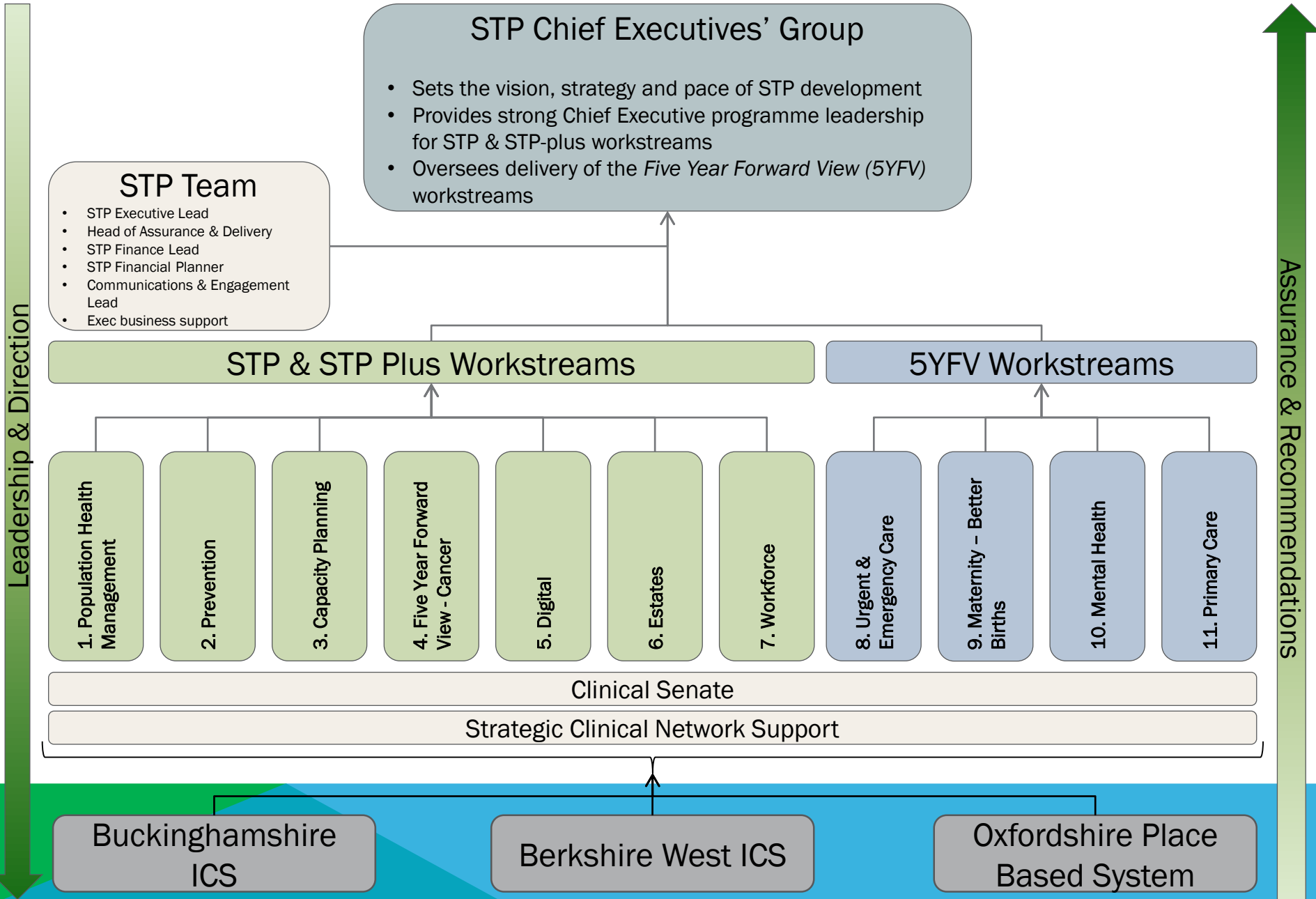
Challenges for BOB

- Significant increase in the population
- Pockets of deprivation
- Increase in demand for services especially frail older people
- Difficulty in recruiting staff, high cost of living
- Ageing buildings not fit for modern use
- Variable access to some specialised services
- Travelling out of area for specialised mental health services

BOB Focus on...

- Delivering new services
- Improving performance; Cancer and Planned care
- Sharing knowledge and information
- Stronger Local voice
- Haven't tackled efficiency savings as an STP- but *have* secured new resources through working together

BOB STP Programme Governance & Workstreams



Digital

Tasks

- Successful bid across TVS to be come a Local Health Care Record Exemplar site (LHCRE)
 - £7.5 million in new funding for over 2 years
 - Shared record to support delivery of care
 - Identification of pathways of care
 - Patient Digital Apps

Need to consider

- Technical options for delivery
- Establish public and citizen engagement
- Transformation of clinical pathways

Risks to Collaboration

- Too many organisations
- Range and complexity of funded programmes
- Poor Communication

Estates

Tasks

- Production of Estates Strategy and plans by organisation
- Development of prioritisation framework to inform Capital investment across 3 systems
- Consolidation of 3 systems strategies into STP Estates and Capital Strategy

What we learnt

- Need an underpinning clinical strategy and capacity plan to support investment in acute hospital sites.
- No consistent approach to funding of primary care premises