

# Catherine Phillips – Director of Finance North Bristol NHS Trust





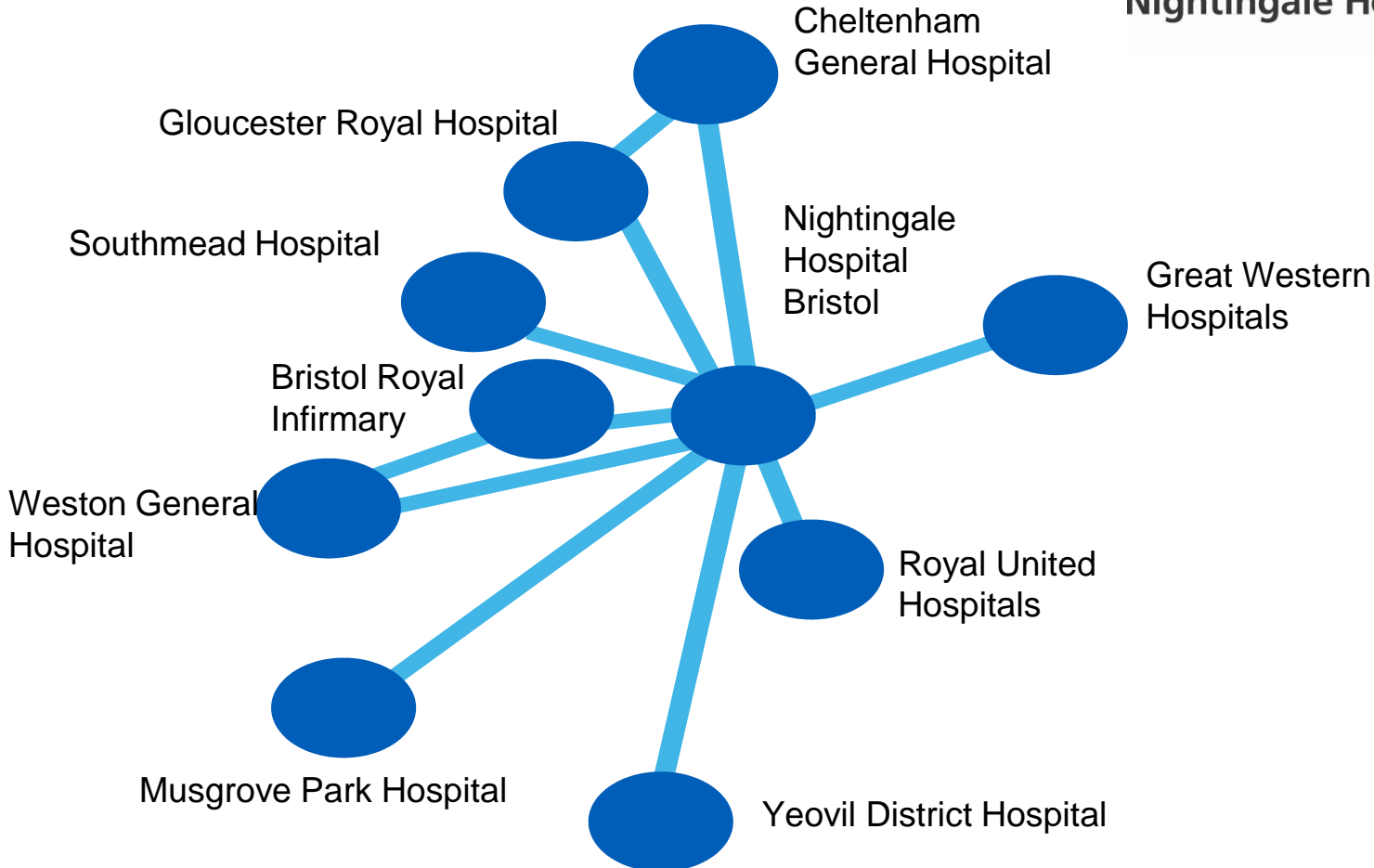
Nightingale Hospital  
Bristol

 Nightingale Hospital Bristol

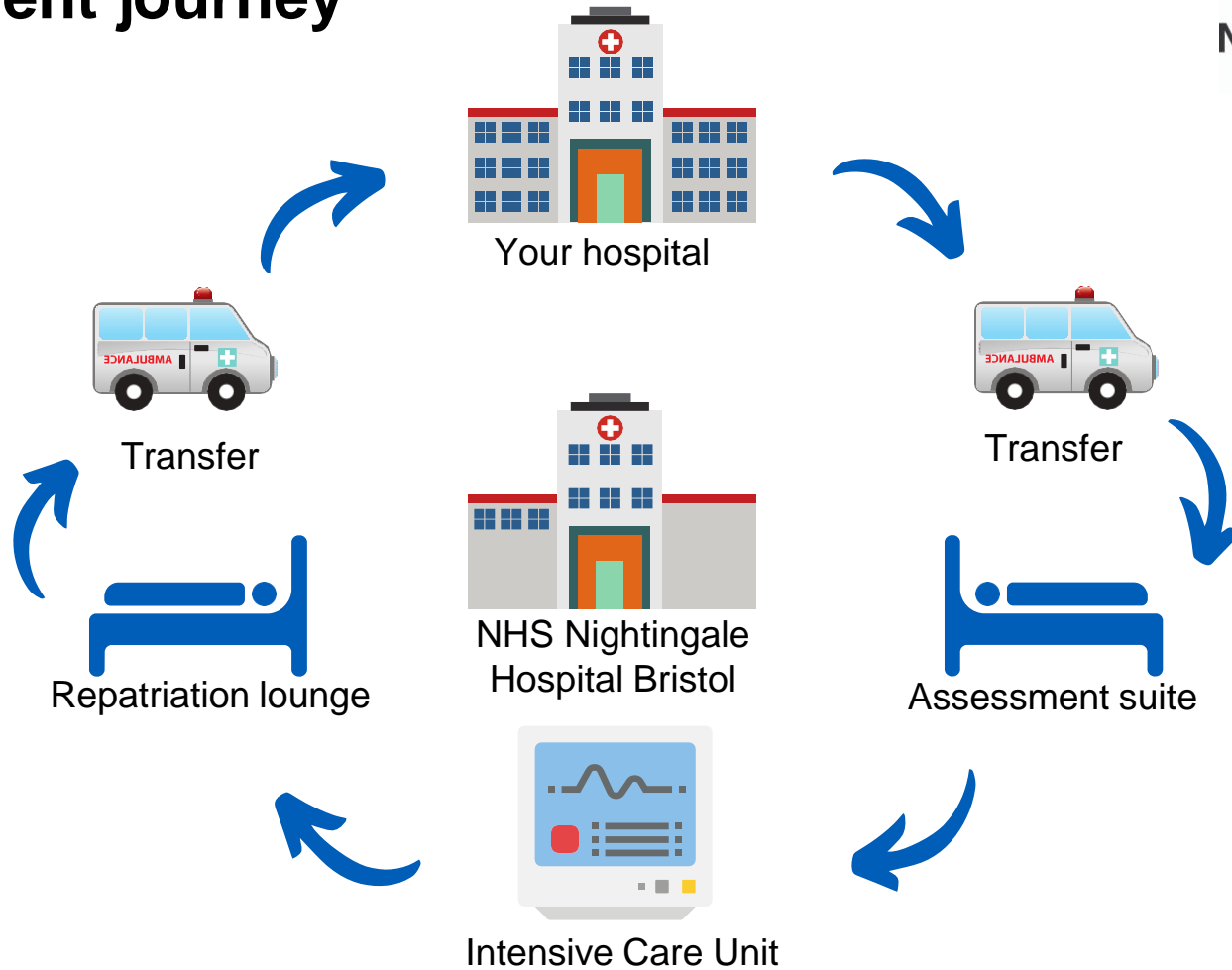
# Severn critical care network



Nightingale Hospital  
Bristol



# The patient journey





## 24 days later ....

- 300 ventilator bedded unit
- Operates a one-way flow from admission pitstop, through ventilator barn to extubation discharge lounge
- Arranges repatriation of patients once extubated
- Arranges transfers of patients developing multi organ failure to units offering the best specialist facility





## Developed in partnership

The NHS Bristol Nightingale Hospital is the result of extraordinary external partnerships including:

- Military
- Ministry of Defence  
(Abbey Wood)
- University of the West of  
England (UWE Bristol)
- Kier
- Volunteers
- And many, many more

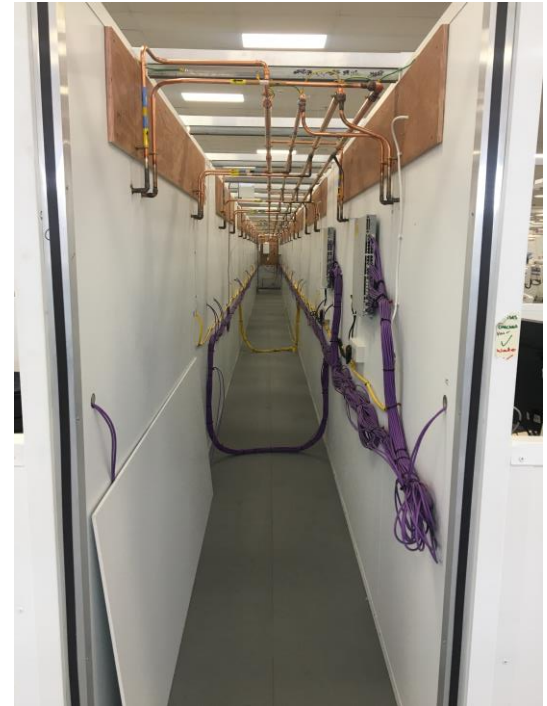




## Innovation

Our hospital has provided the opportunity to introduce innovation and improvements in NHS practice:

- Put in place a workforce model that reduces the burden on the limited resource of doctors and nurses:
  - Bedside support workers
  - Bedside learning coordinators
  - Family liaison team
- A paperless digital solution providing a fully auditable and shareable medical record for each patient
- Employed psychology to support staff working and wellbeing



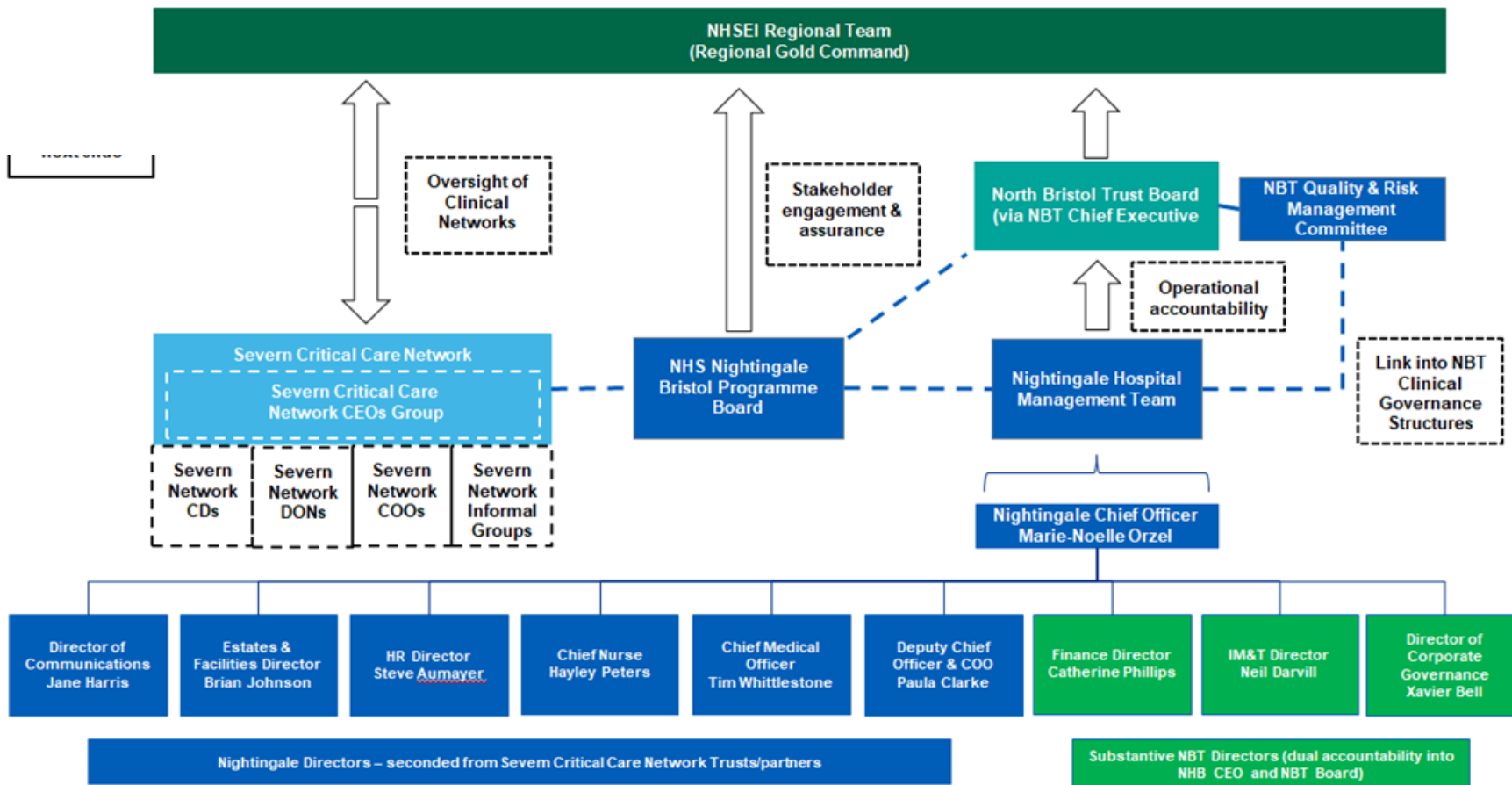
  
Nightingale Hospital  
Bristol

**Don/  
Entry**





Our army colleagues created a virtual hospital plan on the floor of our support hub to facilitate immediate training





Nightingale Hospital Bristol



## What inspired you the most out of all the things you observed in the NHS response to COVID-19?

*“Talking to teams, for example the Bristol Nightingale team, people who’d never met each other, working effectively, at breath-taking pace of delivery, balanced with thought and care. I saw motivated, inspired and aligned leadership”*

Amanda Pritchard, COO, NHSE/I



**NHS** Nightingale Hospital Bristol

We were very proud to host the south west intensive care transfer service on site



WE ARE TAKING  
FORWARD YOUR

NEW IDEAS

FEEDBACK

INSIGHTS

REJOIN THE CONVERSATION ON 1ST FEB

[WWW.ONENHSFINANCE.ORG.UK](http://WWW.ONENHSFINANCE.ORG.UK)