

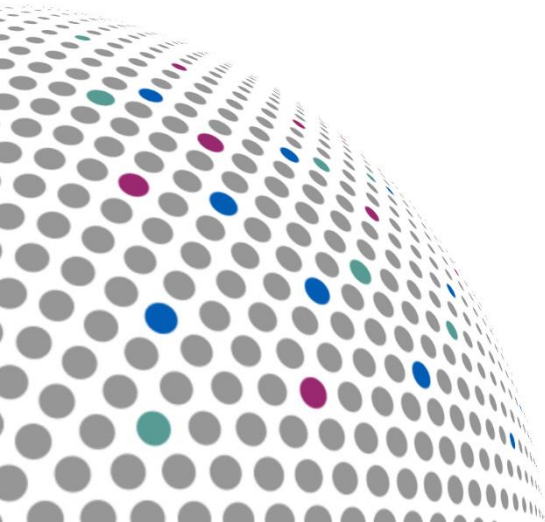


# The non-executive director role in ICS governance

---

Helen Kemp-Taylor

Steve Connor





# Today's session

- Introductions
- Context
- How the session will run
- Please use the chat
- Poll questions





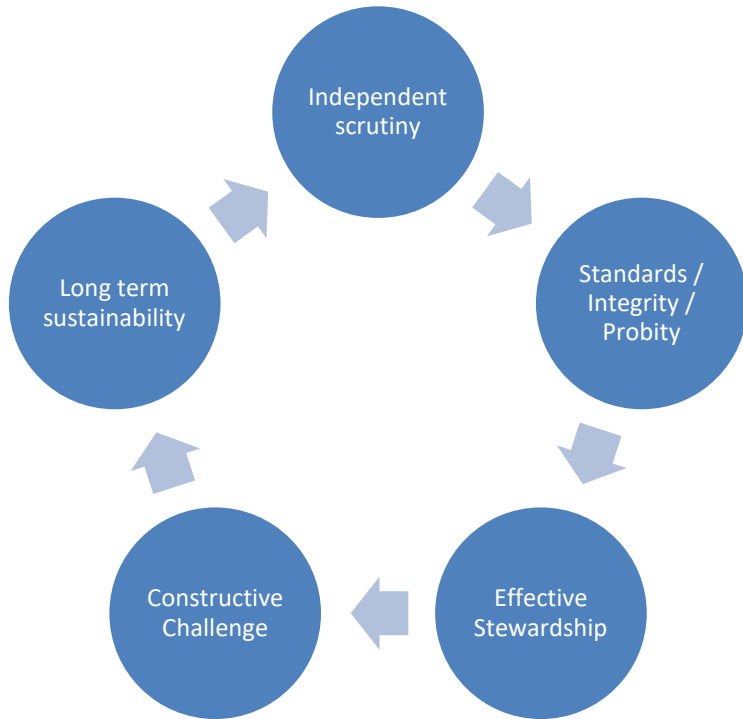
# Working as a system

- Integrated Care Systems (ICS) are a key element of the NHS architecture as it aims to transform care to deliver the aims of NHS long-term plan through collaboration & working as a system.
- System governance involves the arrangements put in place to support partnership working and to embed a collective model of decision making and accountability to deliver shared purpose.
- As system working has increased over recent years, governance arrangements have started to evolve in different ways.

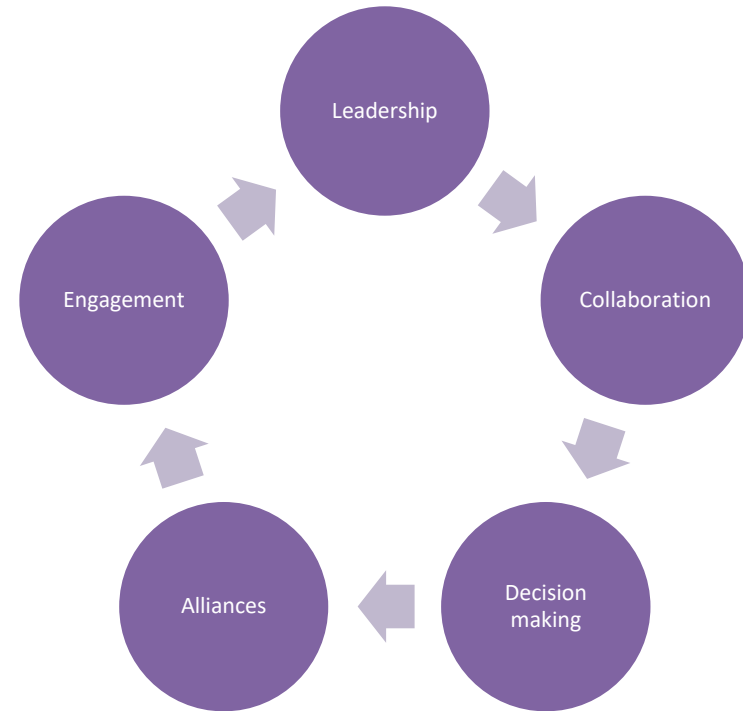


# The role of an NED

## Now: Organisational level

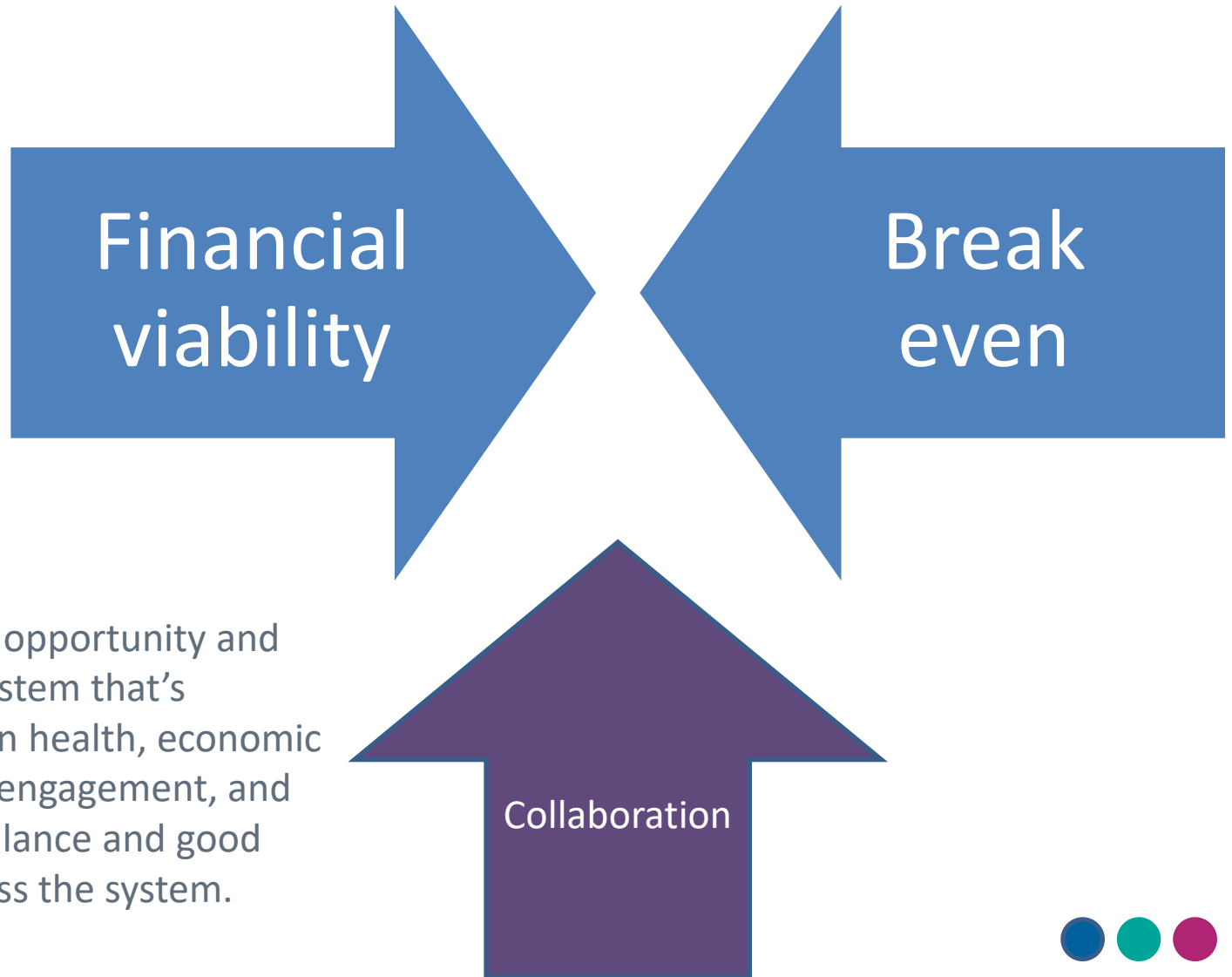


## Future: System level?





# Statutory Responsibilities



Financial  
viability

Break  
even

Collaboration

We need to seize the opportunity and build a sustainable system that's focused on population health, economic regeneration, citizen engagement, and achieving financial balance and good value for money across the system.





# White Paper Challenges / Opportunities

- ICS NHS Board
- Provider collaborative
- Transfer of CCG responsibilities to the ICS
- Place
- Joint committees
- System level financial objectives v organisational statutory financial duties
- Statutory responsibility to collaborate
- Trust
- Local authorities





# Points to Consider

- What is the NED line of sight to ICS? (information/ engagement/ feedback/ relationships – formal and informal)?
- How will you or do you measure/ ensure collaboration? (involvement/ leadership/ collaboration/ outcomes)?
- How can decision making align? (statutory body/ alliances / ICS)
- What have we learned from this during the pandemic and how can we build on this? (Mutual aid/ relationships/ removing organisation barriers) NED Role?





# Breakout Session

1. What is working well now?
2. What do you see as the major challenges and how can they be addressed?
3. What role can / should NED's play in the new system?







---

One trusted business. Two different services

